

TABLE A - TAPER LENGTHS							
Taper Types (m)	Regulatory Speed Limit before Work Begins (km/h)						
	≤ 50	60	70	80	90	100	110 120
Merge Taper Length	1/4	35	55	160	190	210	230 250 280
Lane Shift Taper Length	1/4	30	50	80	100	110	120 130 140
Downstream Taper Length	1/4	30	30	30	30	30	30 30 30
TCF, Signal, and Shoulder Taper Length (min. 5' devices)	1/4	5	8	15	15	15	15 15 15
Minimum Tangent Length between Tapers	1/4	30	60	160	190	210	230 250 280
Run-in Length on Centreline	1/4	40	50	60	60	70	80 90 100

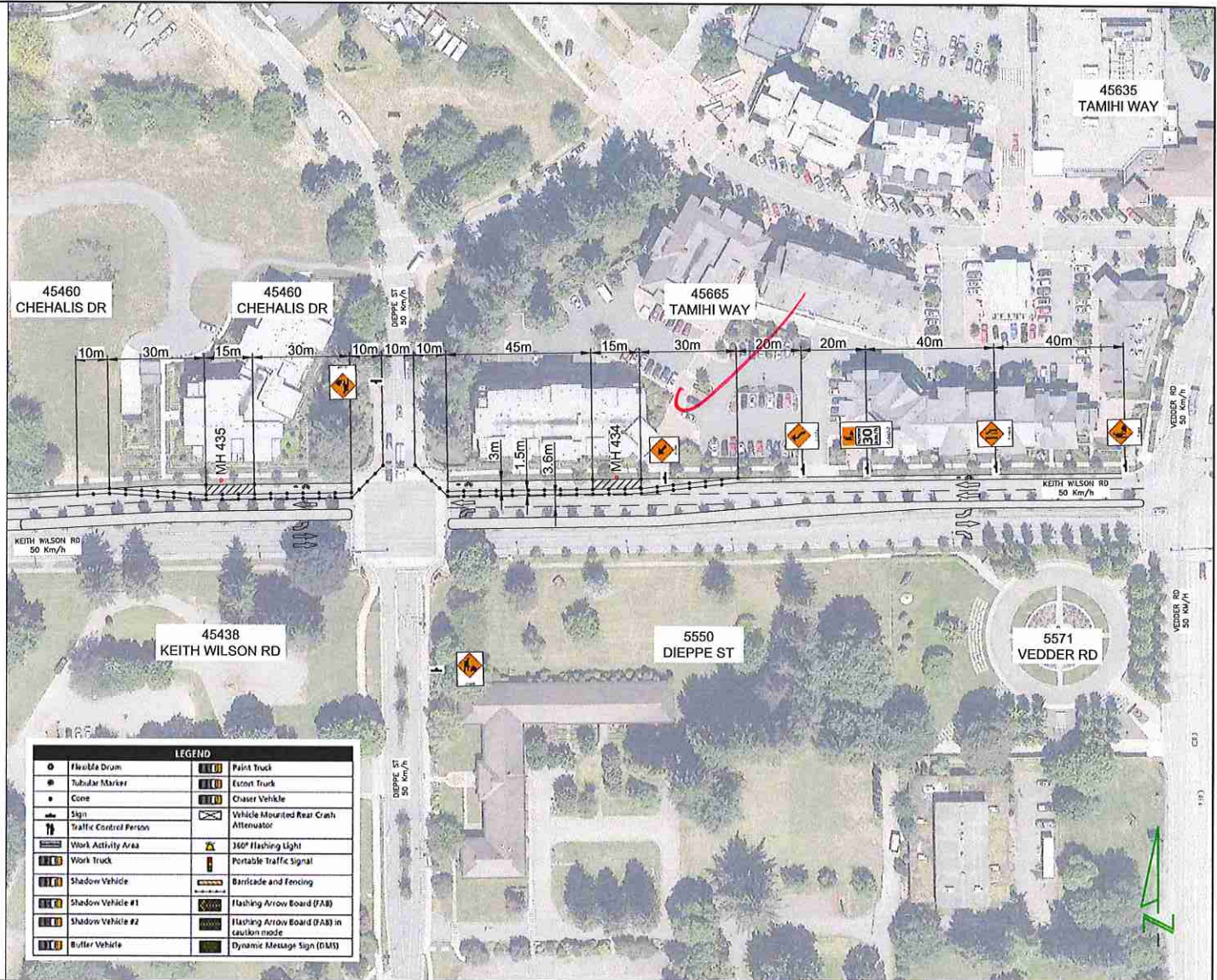
TABLE B - DEVICE SPACING LENGTHS							
Device Spacing (m)	Regulatory Speed Limit before Work Begins (km/h)						
	≤ 50	60	70	80	90	100	110 120
Construction Sign Spacing	A	40	60	80	100	150	200 200
Buffer Space	B	30	40	60	80	110	140 170 200
Channelling Device Spacing for Tapers	C	10	10	15	15	15	15 15 15
Channelling Device Spacing on Curves and Tangents	D	10	10	30	30	40	40 40 50

NOTES:

1. THE WORK REQUIRING THE TRAFFIC CONTROL MEASURE INVOLVES THE PLACING AND SPLICING OF FIBER OPTIC CABLE AT MH 434 LOCATED ON THE NORTH SIDE OF KEITH WILSON RD (APPROX. 68m EAST FROM DIEPPE ST) AND AT MH 435 LOCATED ON THE NORTH SIDE OF KEITH WILSON RD (APPROX. 58m WEST FROM DIEPPE ST) IN CHILLIWACK. THE DURATION OF USE OF THIS MEASURE WILL BE UNTIL THE WORK IS COMPLETED.
2. LANE CLOSURES ARE AS NOTED IN THIS LAYOUT.
3. TIMING OF THE WORKS WILL BE FROM 9:00AM TO 3:00 PM.
4. LOCATION OF THE WORK ZONE IS AS INDICATED ON THIS PLAN FOR CONSTRUCTION.
5. THE MEASURES SHOWN IN THIS TRAFFIC MANAGEMENT PLAN IS IN ACCORDANCE TO THE "BC TRAFFIC MANAGEMENT MANUAL FOR WORK ON ROADWAYS (2015 INTERIM)". CHANGES TO THIS LAYOUT MAY BE MADE BY THE TRAFFIC CONTROL PERSON IN CHARGE TO REFLECT FIELD CONDITIONS.
6. PRIORITY ACCESS WILL BE GIVEN TO EMERGENCY VEHICLES.
7. ALL DIMENSIONS ARE IN METRES.

CONTACT INFORMATION:

ALEC LUNDE:
C: 778-837-4642



LEGEND	
Flexible Drum	Paint Truck
Tubular Marker	Escort Truck
Cone	Chaser Vehicle
Sign	Vehicle Mounted Rear Crash Attenuator
Traffic Control Person	360° Flashing Light
Work Activity Area	Portable Traffic Signal
Work Truck	Barricade and Fencing
Shadow Vehicle	Flashing Arrow Board (FAB)
Shadow Vehicle #1	Flashing Arrow Board (FAB) in caution mode
Shadow Vehicle #2	Dynamic Message Sign (DMS)
Buffer Vehicle	



BC ONE CALL

CALL BEFORE YOU DIG
1 800-474-6888
VANCOUVER AREA
604-257-1940



CONSTRUCTION	PERMIT	DESIGN DM	DRL DM	THE WORKS PROPOSED ON THIS DRAWING SHALL BE AT ALL TIMES REMAIN THE PROPERTY OF TELUS
REV. DESCRIPTION	SUBMITTED DATE	004-510-1842	SCALE: NTS	PROPOSED TRAFFIC CONTROL LAYOUT TO ACCOMMODATE TELECOM CABLE PLACING & SPLICING
REV. DESCRIPTION	RE-SUB DATE		DATE: 09/15/17	ON THE EAST SIDE OF KEITH WILSON RD & EAST OF VEDDER RD IN CHILLIWACK
REV. DESCRIPTION	RE-SUB DATE		ASSOCIATED DRAWINGS	SYSTEM NAME: 2604845
REV. DESCRIPTION	DATE		1.	SHEET 1
REV. DESCRIPTION	DATE		2.	
REV. DESCRIPTION	DATE		3.	
REV. DESCRIPTION	DATE		REF:	

TABLE A - TAPER LENGTHS									
Taper Types (m)	Regulatory Speed Limit before Work Begins (km/h)								
	≤ 50	60	70	80	90	100	110	120	
Merge Taper Length	1/4	35	55	160	190	210	230	250	280
Lane Shift Taper Length	1/4	30	50	80	100	110	120	130	140
Downstream Taper Length	1/4	30	30	30	30	30	30	30	30
TCP, Signal, and Shoulder Taper Length (min. 5 devices)	1/4	5	8	15	15	15	15	15	15
Minimum Tangent Length between Tapers	1/4	30	60	160	190	210	230	250	280
Run-in Length on Centreline	1/4	40	50	60	60	70	80	90	100

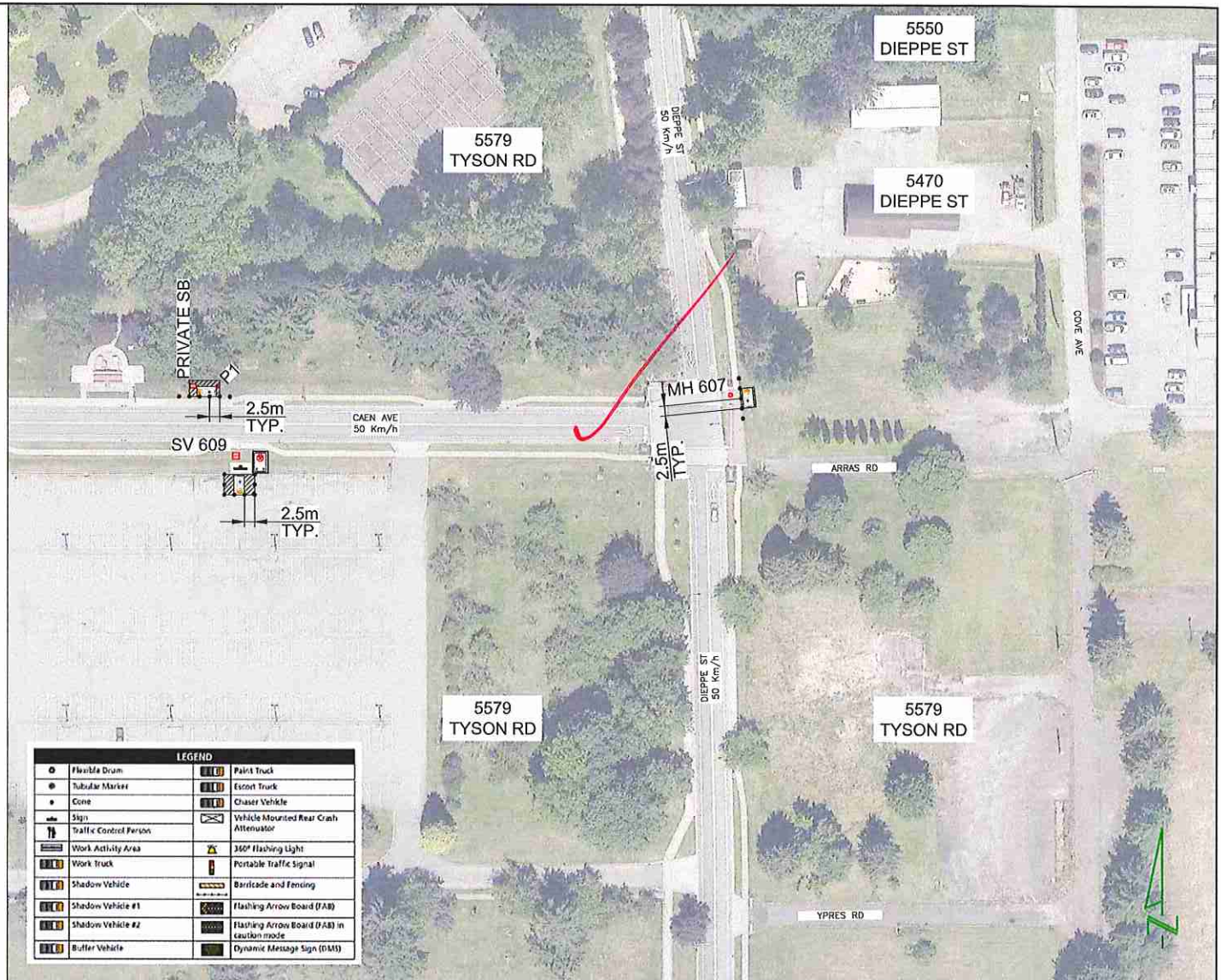
TABLE B - DEVICE SPACING LENGTHS									
Device Spacing (m)	Regulatory Speed Limit before Work Begins (km/h)								
	≤ 50	60	70	80	90	100	110	120	
Construction Sign Spacing	A	40	60	80	100	150	150	200	200
Buffer Space	B	30	40	60	80	110	140	170	200
Channelizing Device Spacing for Tapers	C	10	10	15	15	15	15	15	15
Channelizing Device Spacing on Curves and Tangents	D	10	10	30	30	40	40	40	50

NOTES:

1. THE WORK REQUIRING THE TRAFFIC CONTROL MEASURE INVOLVES THE PLACING AND SPLICING OF FIBER OPTIC CABLE AT MH 607 LOCATED ON THE EAST SIDE OF THE INTERSECTION OF DIEPPE STREET & CAEN AVE, AT SV 609 LOCATED ON THE SOUTH SIDE OF CAEN AVE (APPROX. 115m WEST FROM DIEPPE ST), AND AT PRIVATE SB & P1 LOCATED ON THE NORTH SIDE OF CAEN AVE (APPROX. 120m WEST FROM DIEPPE ST.) IN CHILLIWACK. THE DURATION OF USE OF THIS MEASURE WILL BE UNTIL THE WORK IS COMPLETED.
2. LANE CLOSURES ARE AS NOTED IN THIS LAYOUT.
3. TIMING OF THE WORKS WILL BE FROM 9:00AM TO 3:00 PM.
4. LOCATION OF THE WORK ZONE IS AS INDICATED ON THIS PLAN FOR CONSTRUCTION.
5. THE MEASURES SHOWN IN THIS TRAFFIC MANAGEMENT PLAN IS IN ACCORDANCE TO THE "BC TRAFFIC MANAGEMENT MANUAL FOR WORK ON ROADWAYS (2015 INTERIM)". CHANGES TO THIS LAYOUT MAY BE MADE BY THE TRAFFIC CONTROL PERSON IN CHARGE TO REFLECT FIELD CONDITIONS.
6. PRIORITY ACCESS WILL BE GIVEN TO EMERGENCY VEHICLES.
7. ALL DIMENSIONS ARE IN METRES.

CONTACT INFORMATION:

ALEC LUNDE:
C: 778-837-4642



LEGEND	
Flexible Drum	Patrol Truck
Tubular Marker	Escort Truck
Cone	Chaser Vehicle
Sign	Vehicle Mounted Rear Crash Attenuator
Traffic Control Person	360° Flashing Light
Work Activity Area	Portable Traffic Signal
Work Truck	Barricade and Fencing
Shadow Vehicle	Flashing Arrow Board (FAB)
Shadow Vehicle #1	Flashing Arrow Board (FAB) in caution mode
Shadow Vehicle #2	Dynamic Message Sign (DMS)
Buffer Vehicle	



BC ONE CALL

CALL BEFORE YOU DIG
1-800-474-6888
VANCOUVER AREA
604-257-1940



REV. DESCRIPTION	DATE	DESIGN: DM	DATE: 06/15/17
REV. DESCRIPTION	DATE	DESIGN: DM	DATE: 06/15/17
REV. DESCRIPTION	DATE	DESIGN: DM	DATE: 06/15/17
REV. DESCRIPTION	DATE	DESIGN: DM	DATE: 06/15/17
REV. DESCRIPTION	DATE	DESIGN: DM	DATE: 06/15/17
REV. DESCRIPTION	DATE	DESIGN: DM	DATE: 06/15/17
REV. DESCRIPTION	DATE	DESIGN: DM	DATE: 06/15/17
REV. DESCRIPTION	DATE	DESIGN: DM	DATE: 06/15/17
REV. DESCRIPTION	DATE	DESIGN: DM	DATE: 06/15/17
REV. DESCRIPTION	DATE	DESIGN: DM	DATE: 06/15/17

THE WORKS PROPOSED ON THIS DRAWING SHALL BE AT ALL TIMES BEING THE PROPERTY OF TELUS

PROPOSED TRAFFIC CONTROL LAYOUT TO ACCOMMODATE TELECOM CABLE PLACING & SPLICING

ON THE EAST SIDE OF THE INTERSECTION OF DIEPPE STREET & CAEN AVE, AND ALSO NEAR CAEN AVE (WEST OF DIEPPE ST) IN CHILLIWACK

SYSTEM NAME: 2604846

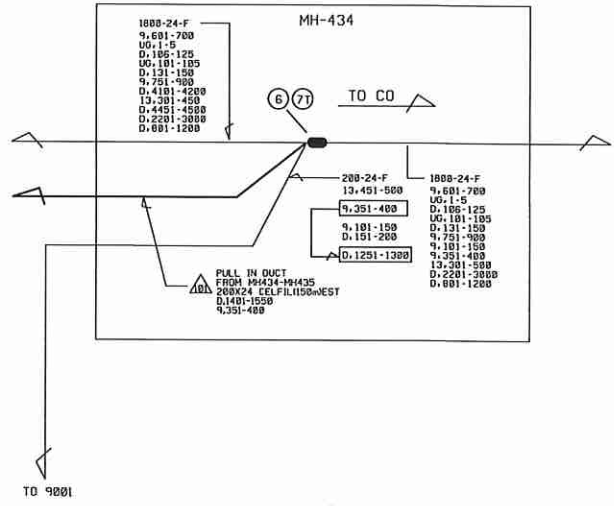
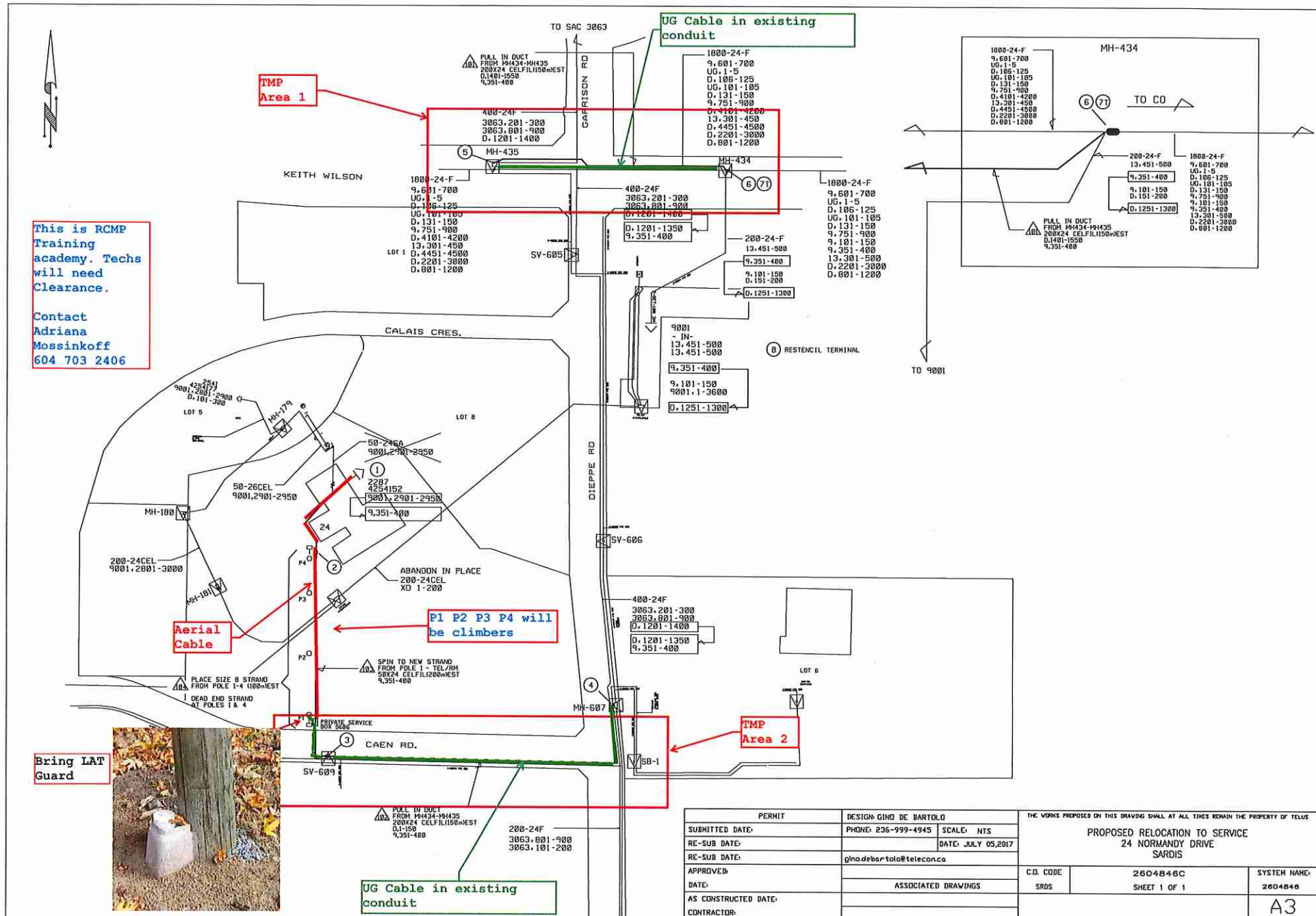
SHEET 2



This is RCMP Training academy. Techs will need Clearance.
 Contact
 Adriana Mossinkoff
 604 703 2406



Bring LAT Guard



P1 P2 P3 P4 will be climbers

TMP Area 1

TMP Area 2

UG Cable in existing conduit

PERMIT		DESIGN: GINO DE BARTOLO		THE WORKS PROPOSED ON THIS DRAWING SHALL AT ALL TIMES REMAIN THE PROPERTY OF TELUS	
SUBMITTED DATE:	PHONE: 236-999-4945	SCALE:	NTS	PROPOSED RELOCATION TO SERVICE 24 NORMANDY DRIVE SARDIS	
RE-SUB DATE:		DATE:	JULY 05, 2017		
RE-SUB DATE:	glnadbartolo@telecomca				
APPROVED:		ASSOCIATED DRAWINGS		C.O. CODE	2604846C
DATE:				SRDS	SHEET 1 OF 1
AS CONSTRUCTED DATE:					SYSTEM NAME:
CONTRACTOR:					2604846
					A3

